

# SPEC SHEET + MEASUREMENTS

PORT AUTHORITY

Port Authority® C-FREE® Cypress 1/4-Zip. K870

## Product photo



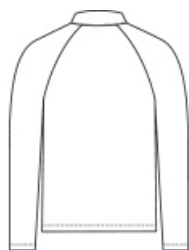
Endlessly versatile, this 1/4-zip strikes the right balance between casual comfort and professional edge. Made from sustainable materials, this C-FREE carbon-reducing style is a perfect mid-layer weight—plus it's snag-resistant with a subtle texture.

- 6.9-ounce, 56% recycled polyester/44% cotton double knit
- This product's carbon footprint has been measured and reduced through a combination of preferred materials and investing in carbon offset projects through the ClimeCo Certified Product™ Program
- Snag-resistant
- Dyed-to-match, recycled, reverse coil zipper with antique nickel pull
- Self-fabric chin guard
- Raglan sleeves
- Self-turned cuffs
- Self-turned hem
- Tag-free label

## Sketches



front



back

## A C-FREE® Product

We start by reducing the product's impact by switching to at least 50% preferred materials. We then measure and reduce the total carbon footprint of each product in the C-FREE program—from cradle-to-grave—through the ClimeCo Certified Product™ Program. This certification purchases third-party, verified carbon offsets through ClimeCo.

## CARE INSTRUCTIONS

Machine Wash Cold With Like Colors. Do Not Bleach. Tumble Dry Low. Warm Iron If Necessary.

# SPEC SHEET + MEASUREMENTS

PORT AUTHORITY

Port Authority® C-FREE® Cypress 1/4-Zip. K870

## PRODUCT MEASUREMENTS

	XS	S	M	L	XL	2XL	3XL	4XL
Body Length at Back	27	28	29	30	31	32	32 1/2	33
Chest	19 1/4	20 3/4	22 1/4	23 3/4	25 1/4	26 3/4	28 3/4	30 3/4
Raglans and Dolmans Sleeve Length	33 1/4	34	34 3/4	35 1/2	36 1/4	37	37 3/4	38 1/2

**Body Length at Back:** Measured from high point shoulder to finished hem at back.

**Chest:** Measured across the chest one inch below armhole when laid flat.

**Raglans and Dolmans Sleeve Length:** Measure from neck edge to finished hem.

## SIZE CHARTS

	XS	S	M	L	XL	2XL	3XL	4XL
Chest	32-34	35-37	38-40	41-43	44-46	47-49	50-53	54-57

# SPEC SHEET + MEASUREMENTS

PORT AUTHORITY.

Port Authority® C-FREE® Cypress 1/4-Zip. K870

## HOW TO MEASURE

---



### CHEST

Measure under the arm and around the fullest part of the chest with arms down, keeping tape horizontal.

## COLORS

---

Please note: PMS code information is shown only when an exact match is available.



Deep Black  
PMS BLACK  
C



Grey Steel  
PMS 426C



Rich Red  
PMS 207C



True Navy  
PMS 533C



True Royal  
PMS 7687C