

SPEC SHEET + MEASUREMENTS

PORT AUTHORITY.

Port Authority® Puffer Jacket. J852

Product photo



With wider baffles for a modern look, this water-resistant puffer looks cool while keeping you warm.

- 100% polyester shell and lining
- Molded center front zipper
- Interior storm flap
- Interior right chest pocket
- Zippered hand pockets
- Insulation method: 4.4-oz. polyfill
- Water protection method: water-repellent finish
- Port Pocket™ for decoration access
- Adjustable hem with locking drawcord

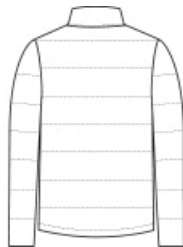
CARE INSTRUCTIONS

Machine Wash Cold. Mild Detergent. Only Non-Chlorine Bleach When Needed. Tumble Dry Low. Cool Iron If Necessary. Do Not Dry Clean.

Sketches



front



back

SPEC SHEET + MEASUREMENTS

PORT AUTHORITY.

Port Authority® Puffer Jacket. J852

PRODUCT MEASUREMENTS

	XS	S	M	L	XL	2XL	3XL	4XL
Body Length at Back	27	28	29	30	31	32	32 1/2	33
Chest Width	19 1/2	21	22 1/2	24	25 1/2	27	29	31
Sleeve Length from Center Back	34 3/4	35 1/2	36 1/4	37	37 3/4	38 1/2	39 1/4	40

Body Length at Back: Measured from high point shoulder to finished hem at back.

Chest Width: Measured across the chest one inch below armhole when laid flat.

Sleeve Length from Center Back: Measure from Center Back neck to shoulder point to sleeve hem.

SIZE CHARTS

	XS	S	M	L	XL	2XL	3XL	4XL
Chest	32-34	35-37	38-40	41-43	44-46	47-49	50-53	54-57

SPEC SHEET + MEASUREMENTS

PORT AUTHORITY.

Port Authority® Puffer Jacket. J852

HOW TO MEASURE



CHEST

Measure under the arm and around the fullest part of the chest with arms down, keeping tape horizontal.

COLORS

Please note: PMS code information is shown only when an exact match is available.



Deep Black
PMS BLACK
C



Dusk Blue
PMS 2374C



Shadow Grey
PMS COOL
GREY 10C