

# SPEC SHEET + MEASUREMENTS

**SPORT-TEK**

## Sport-Tek® Re-Compete Fleece Pullover Hoodie. ST730

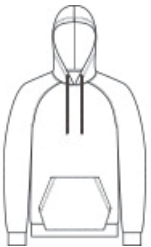
### Product photo



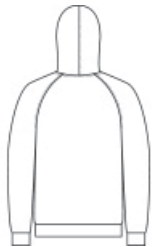
This planet-friendly, print-friendly hoodie outcompetes the others with its peached face, brushed back and ultra-matte finish. Made to perform, it's also super soft, wicks moisture, fights static and features PosiCharge technology to lock in colors and logos.

- 5.5-ounce, 100% recycled polyester with PosiCharge technology
- This product's carbon footprint has been measured and reduced through a combination of preferred materials and investing in carbon offset projects through the ClimeCo Certified Product™ Program
- 100% recycled polyester thread and drawcords
- Anti-static
- Recycled tear-away removable label
- Two-panel hood
- Raglan sleeves
- Front pouch pocket
- Open cuffs and hem

### Sketches



front



back

### A C-FREE® Product

We start by reducing the product's impact by switching to at least 50% preferred materials. We then measure and reduce the total carbon footprint of each product in the C-FREE program—from cradle-to-grave—through the ClimeCo Certified Product™ Program. This certification purchases third-party, verified carbon offsets through ClimeCo.

### CARE INSTRUCTIONS

Machine Wash Cold With Like Colors. Do Not Use Fabric Softener. Do Not Bleach. Tumble Dry Low. Remove Promptly. Cool Iron If Necessary.

# SPEC SHEET + MEASUREMENTS

**SPORT-TEK**

Sport-Tek® Re-Compete Fleece Pullover Hoodie. ST730

## PRODUCT MEASUREMENTS

	XS	S	M	L	XL	2XL	3XL	4XL
Body Length at Back	26 1/2	27 1/2	28 1/2	29 1/2	30 1/2	31 1/2	32	32 1/2
Chest	18	19 1/2	21	22 1/2	24	25 1/2	27 1/2	29 1/2
Raglans and Dolmans Sleeve Length	34 1/4	35	35 3/4	36 1/2	37 1/4	38	38 3/4	39 1/2

**Body Length at Back:** Measured from high point shoulder to finished hem at back.

**Chest:** Measured across the chest one inch below armhole when laid flat.

**Raglans and Dolmans Sleeve Length:** Measure from neck edge to finished hem.

## SIZE CHARTS

	XS	S	M	L	XL	2XL	3XL	4XL
Chest	32-34	35-37	38-40	41-43	44-46	47-49	50-53	54-57

# SPEC SHEET + MEASUREMENTS



Sport-Tek® Re-Compete Fleece Pullover Hoodie. ST730

## HOW TO MEASURE

---



### CHEST

Measure under the arm and around the fullest part of the chest with arms down, keeping tape horizontal.

## COLORS

---

Please note: PMS code information is shown only when an exact match is available.



Black  
PMS BLACK  
C



Iron Grey  
PMS 426C



True Navy  
PMS 533C



True Red  
PMS 186C



True Royal  
PMS 7687C